

# EUPROMS study

Europa Uomo patient reported outcome study

The first ever prostate cancer quality of life survey conducted by patients for patients

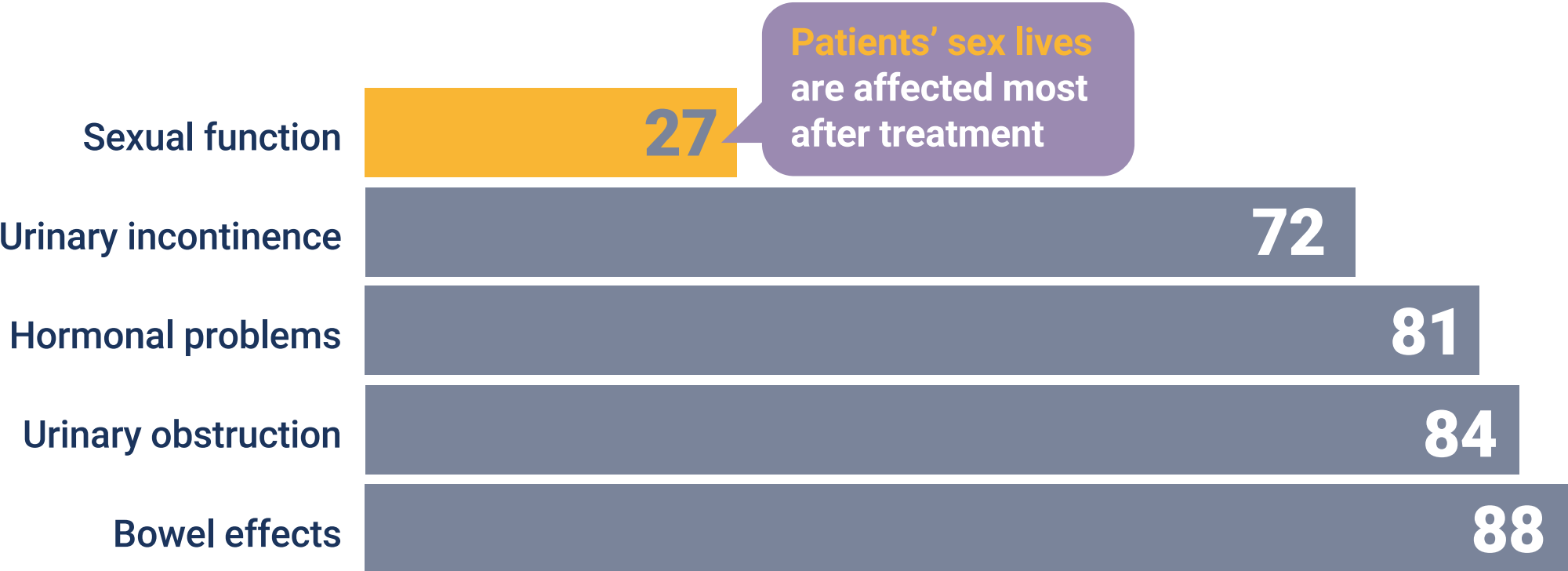
**EUROPA UOMO** 

The Voice of Men with Prostate Cancer in Europe



# (G2) How does treatment affect quality of life?

(Quality of life scores\*. Lowest score indicates most troublesome effects)



Patients' sex lives are affected most after treatment

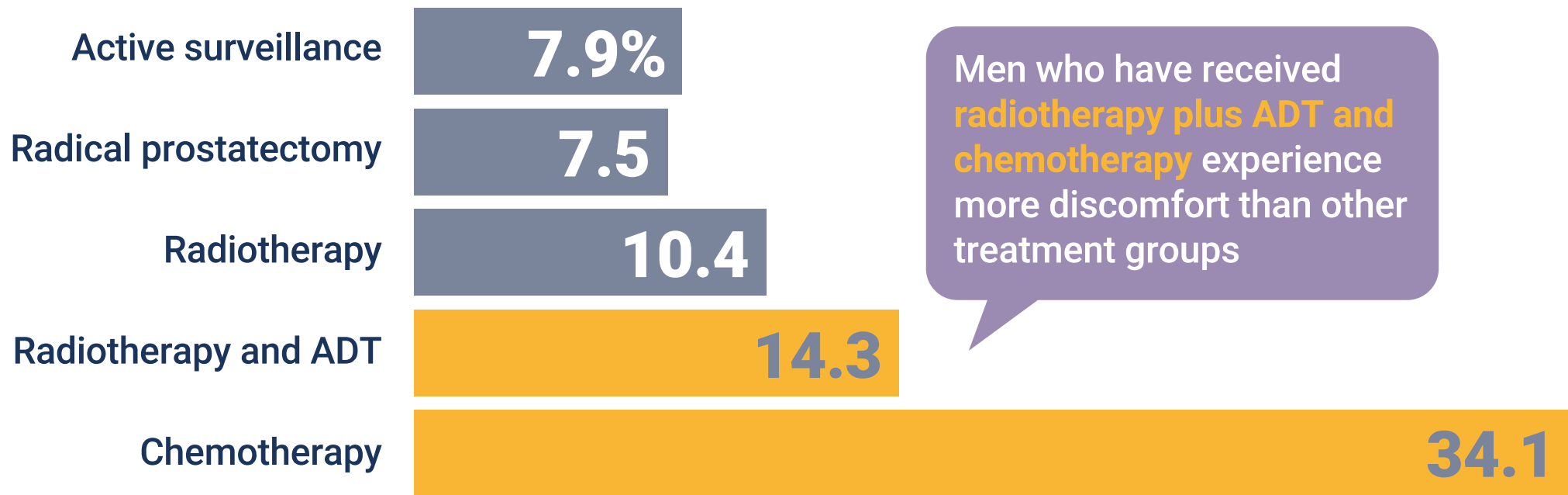
\*EPIC-26 scores

← Worse quality of life

Better quality of life →

# (D1) Which treatments are linked with pain or discomfort?

(% of respondents saying they were in moderate, severe or extreme pain/discomfort at time of survey\*)

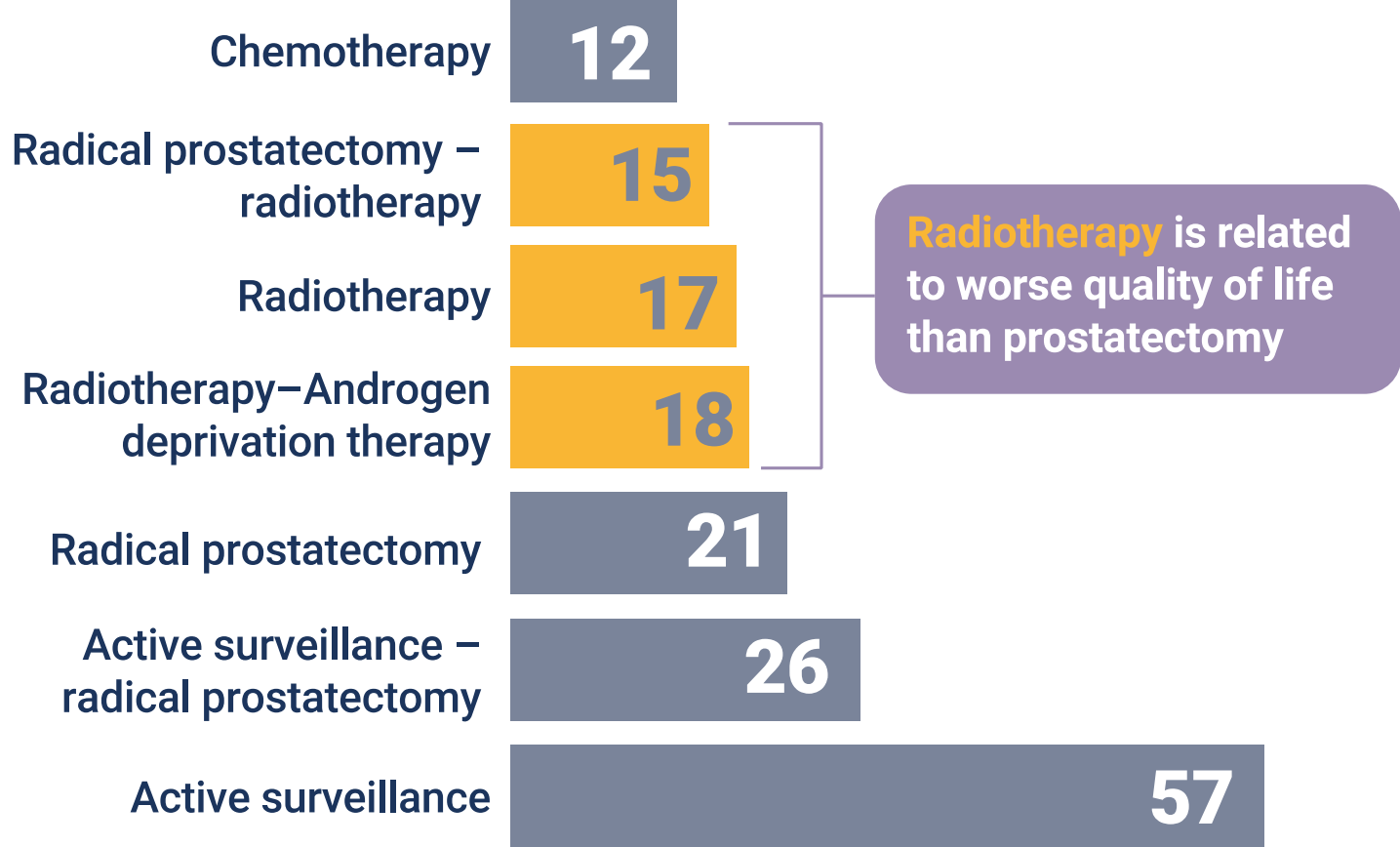


\*EQ-5D-5L questionnaire



# (S1) How is sexual function after different treatments?

(Quality of life scores\*. Lowest score indicates worst effects)



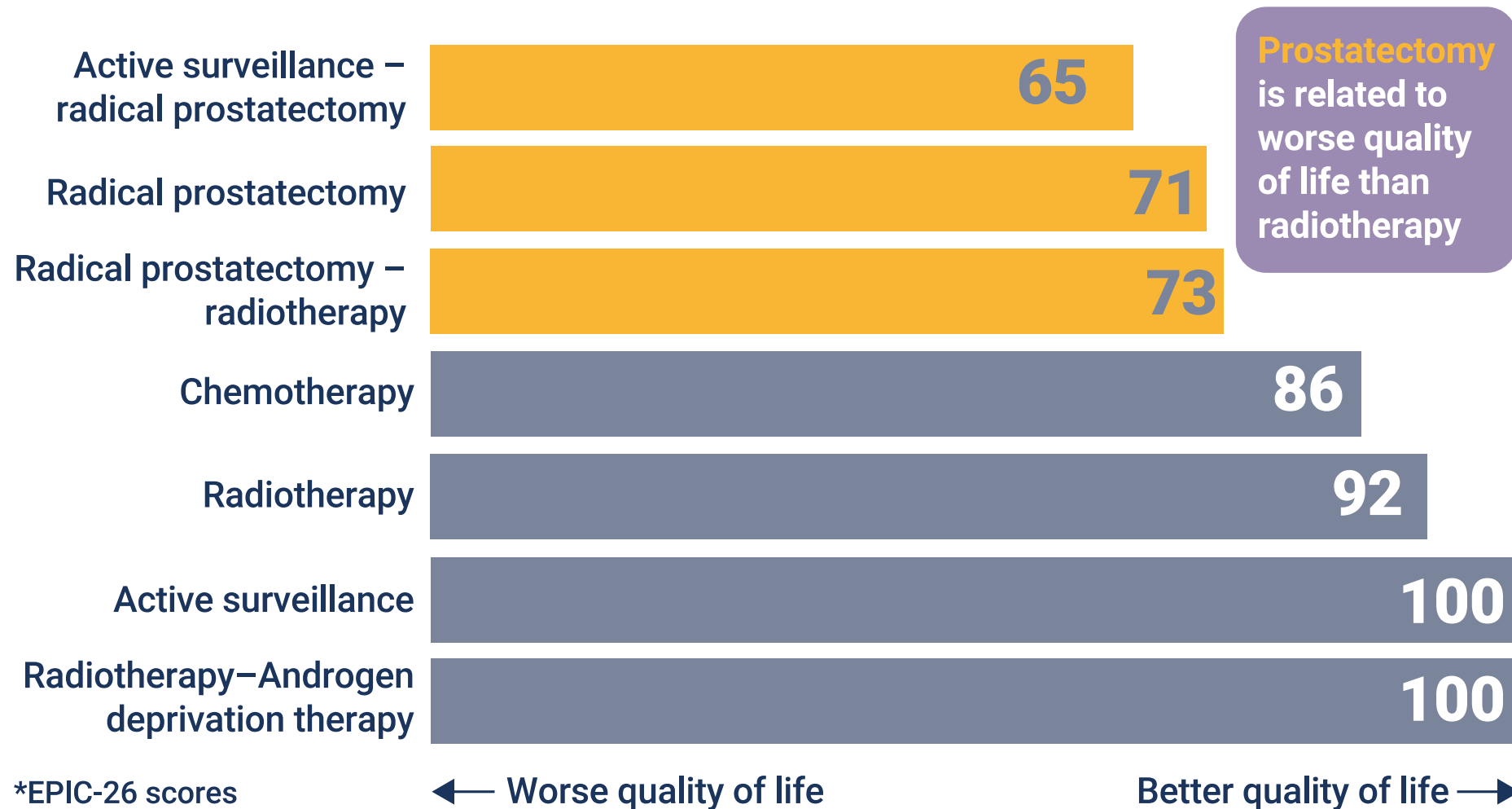
\*EPIC-26 scores

← Worse quality of life

Better quality of life →

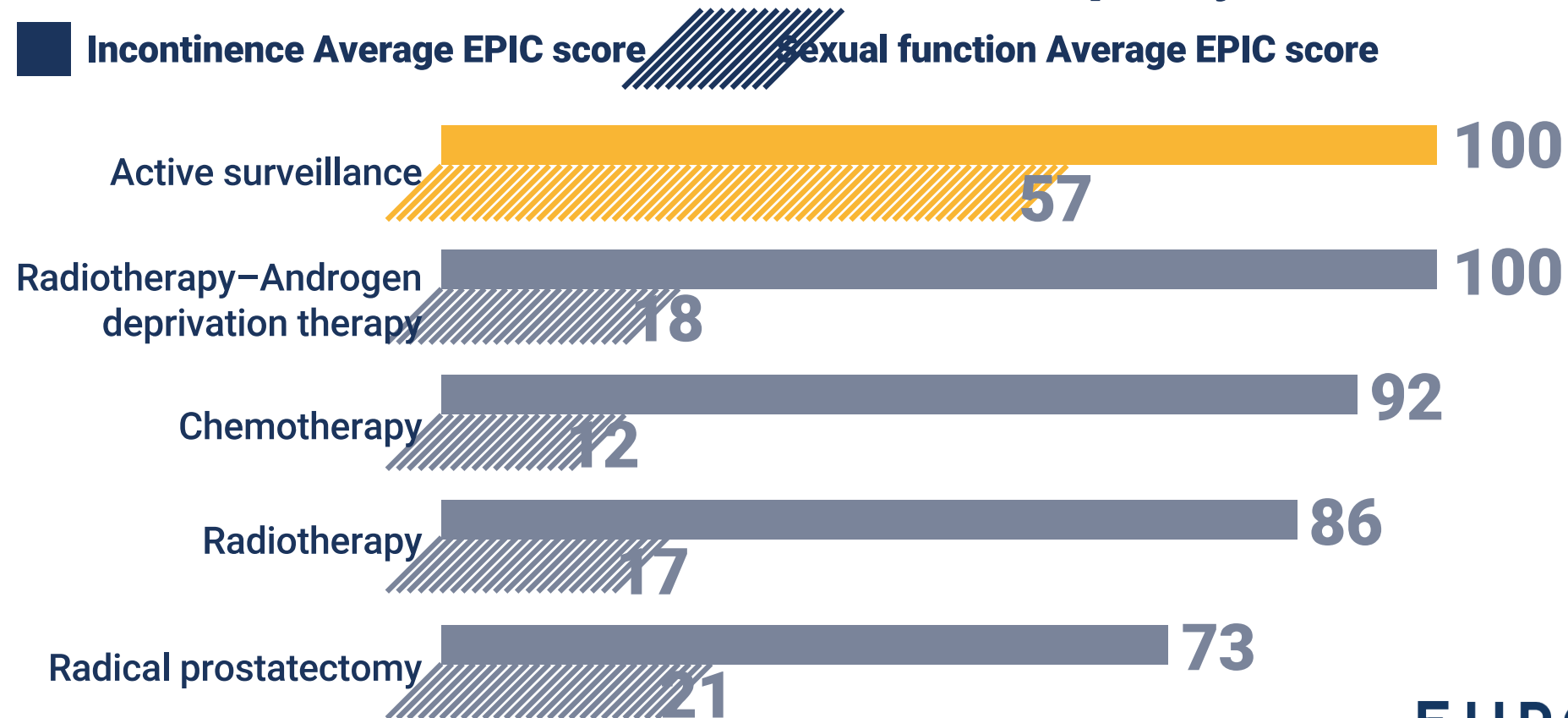
# (U1) How is continence after different treatments?

(Quality of life scores\*. Lowest score indicates worst effects)



# Take-home messages

## 1. Active surveillance should be considered as the first treatment in order to ensure the best quality of life

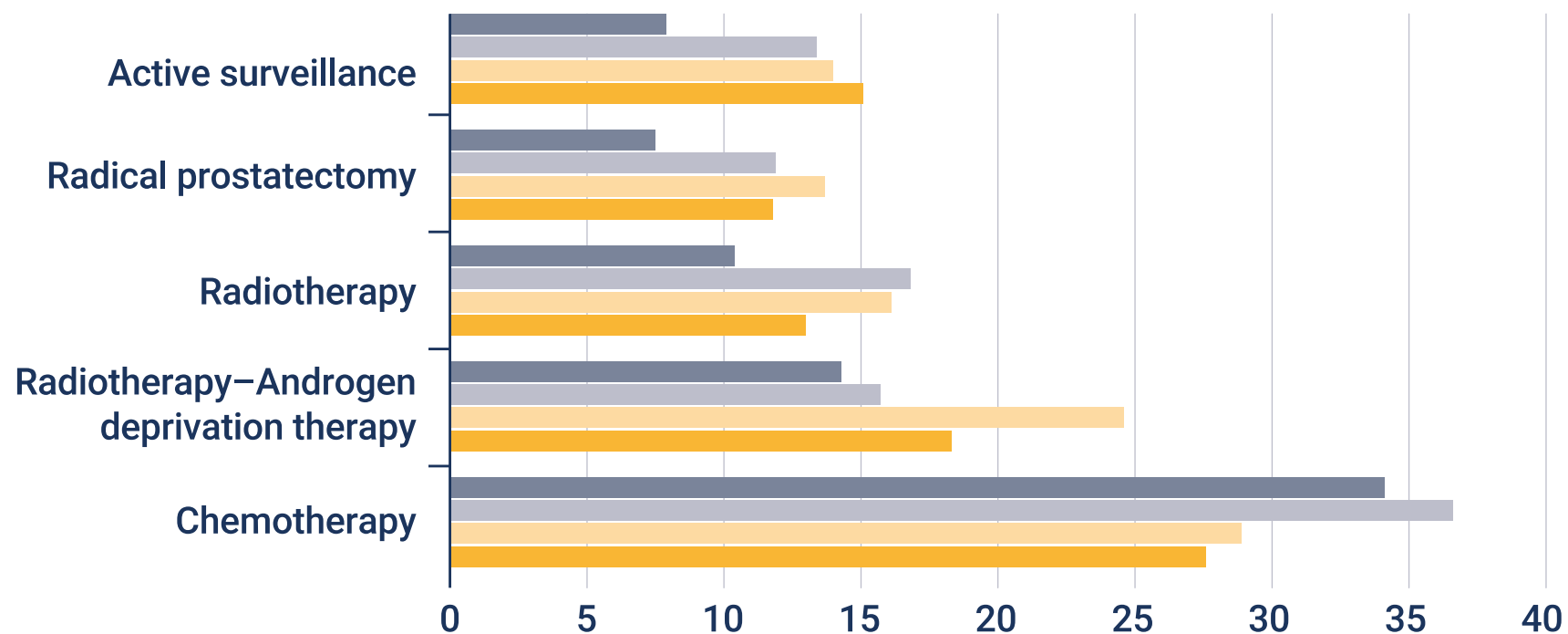


# Take-home messages

## 2. Early detection is key

(% of patients with moderate, severe and very severe problems)

Discomfort Tiredness Insomnia Mental health



# Take-home messages

## 3. We need cancer centres with multidisciplinary teams

